

# Comparison of Different Irrigation Methods Based on the Parametric Evaluation Approach in West North Ahwaz Plain

Mohammad Albaji

*<sup>1</sup>Irrigation and Drainage Dept., Faculty of Water Sciences Eng, Shahid Chamran University, Ahwaz, Iran. P.O.Box: 61357-8-3151. Email:m\_albaji2000@yahoo.co.uk ,*

## Abstract

The main objective of this research is to compare different irrigation methods based upon a parametric evaluation system in an area of 37325 ha in the West North Ahwaz Plain located in the Khuzestan Province, in the Southwest of Iran. The Soil properties of the study area such as texture, depth, electrical conductivity, drainage, calcium carbonate content and slope were derived from a semi-detailed soil study carried out on the West North Ahwaz Plain on a scale of 1:20000. Once the soil properties were analyzed and evaluated, suitability maps were generated for surface, sprinkle and drip Irrigation methods using Remote Sensing (RS) Techniques and Geographic Information System (GIS). The obtained results showed that for 4233.46 ha (11.36%) of the study area surface irrigation method was highly recommended ; whereas for 9329.14 ha.( 25.01%) of the study area a sprinkle irrigation method would provide to be extremely efficient and suitable ;moreover, it was found that 1724.88 ha (4.64%) of the study area was highly suitable for drip irrigation methods; however, soil series coded 2, 7, 8, 10 and 11 and covering an area of 8714.66 ha (23.34 %) were incompatible for sprinkle , drip and surface irrigation systems. The results demonstrated that by applying sprinkle irrigation instead of surface and drip irrigation methods, the arability of 35038, 81 ha (93.87%) in the West North Ahwaz Plain will improve. In addition by applying drip Irrigation instead of surface and sprinkle irrigation methods, the land suitability of 1821, 12 ha (4.88%) of this Plain will improve. The comparison of the different types of irrigation techniques revealed that the sprinkle irrigation method was more effective and efficient than the drip and surface irrigations methods for improving land productivity. It is of note however that the main limiting factor in using surface and sprinkle irrigation methods in this area were Salinity & Alkalinity, Drainage and Soil Texture and the main limiting factors in using drip irrigation methods were the Salinity & Alkalinity, Drainage, Soil Texture and Calcium Carbonate.

**Key words:** Surface irrigation, sprinkle irrigation, drip irrigation, land suitability evaluation, parametric method, soil series.

## 1. Introduction

Food security and stability in the world greatly depends on the management of natural resources. Due to the depletion of water resources and an increase in population, the extent of irrigated area per capita is declining and irrigated lands now produce 40% of the food supply (Hargreaves and Mekley.1998). Consequently, available water resources will not be able to meet various demands in the near future and this will inevitably result into the seeking of newer lands for irrigation in order to achieve sustainable global food security. Land suitability, by definition, is the natural capability of a given land to support a defined use. The process of land suitability classification is the appraisal and grouping of specific areas of land in terms of their suitability for a defined use.

According to FAO methodology (1976) land suitability is strongly related to "land qualities" including erosion resistance, water availability, and flood hazards which are in themselves immeasurable qualities. Since these qualities are derived from "land characteristics", such as slope angle and length, rainfall and soil texture which are measurable or estimable, it is advantageous to use the latter indicators in the land suitability studies, and then use the land parameters for determining the land suitability for irrigation purposes. Sys et al. (1991) suggested a parametric evaluation system for irrigation methods which was primarily based upon physical and chemical soil properties. In their proposed system, the factors affecting soil suitability for irrigation purposes can be subdivided into four groups:

- Physical properties determining the soil-water relationship in the soil such as permeability and available water content;
- Chemical properties interfering with the salinity/alkalinity status such as soluble salts and exchangeable Na;
- Drainage properties;
- Environmental factors such as slope.

Briza et al. (2001) applied a parametric system (Sys et al. 1991) to evaluate land suitability for both surface and drip irrigation in the Ben Slimane Province, Morocco, while no highly suitable areas were found in the studied area. The largest part of the agricultural areas was classified as marginally suitable, the most limiting factors being physical parameters such as slope, soil calcium carbonate, sandy soil texture and soil depth.

Bazzani and Incerti (2002) also provided a land suitability evaluation for surface and drip irrigation systems in the province of Larche, Morocco, by using parametric evaluation systems. The results showed a large difference between applying the two different evaluations. The area not suitable for surface irrigation was 29.22% of total surface and 9% with the drip irrigation while the suitable area was 19% versus 70%. Moreover, high

suitability was extended on a surface of 3.29% in the former case and it became 38.96% in the latter. The main limiting factors were physical limitations such as the slope and sandy soil texture.

Bienvue et al. (2003) evaluated the land suitability for surface (gravity) and drip (localized) irrigation in the Thies, Senegal, by using the parametric evaluation systems. Regarding surface irrigation, there was no area classified as highly suitable ( $S_1$ ). Only 20.24% of the study area proved suitable ( $S_2$ , 7.73%) or slightly suitable ( $S_3$ , 12.51%). Most of the study area (57.66%) was classified as unsuitable ( $N_2$ ). The limiting factor to this kind of land use was mainly the soil drainage status and texture that was mostly sandy while surface irrigation generally requires heavier soils. For drip (localized) irrigation, a good portion (45.25%) of the area was suitable ( $S_2$ ) while 25.03% was classified as highly suitable ( $S_1$ ) and only a small portion was relatively suitable ( $N_1$ , 5.83%) or unsuitable ( $N_2$ , 5.83%). In the latter cases, the handicap was largely due to the shallow soil depth and incompatible texture as a result of a large amount of coarse gravel and/or poor drainage.

Mbodj et al. (2004) performed a land suitability evaluation for two types of irrigation i. e, surface irrigation and drip irrigation, in the Tunisian Oued Rmel Catchment using the suggested parametric evaluation. According to the results, the drip irrigation suitability gave more irrigable areas compared to the surface irrigation practice due to the topographic (slope), soil (depth and texture) and drainage limitations encountered with in the surface irrigation suitability evaluation.

Barberis and Minelli (2005) provided land suitability classification for both surface and drip irrigation methods in Shouyang county, Shanxi province, China where the study was carried out by a modified parametric system. The results indicated that due to the unusual morphology, the area suitability for the surface irrigation (34%) is smaller than the surface used for the drip irrigation (62%). The most limiting factors were physical parameters including slope and soil depth.

Dengize (2006) also compared different irrigation methods including surface and drip irrigation in the pilot fields of central research institute, Ikizce research farm located in southern Ankara. He concluded that the drip irrigation method increased the land suitability by 38% compared to the surface irrigation method. The most important limiting factors for surface irrigation in study area were soil salinity, drainage and soil texture, respectively whereas, the major limiting factors for drip or localized irrigation were soil salinity and drainage.

Liu et al. (2006) evaluated the land suitability for surface and drip irrigation in the Danling County, Sichuan province, China, using a Sys's parametric evaluation system. For surface irrigation the most suitable areas ( $S_1$ ) represented about (24%) of Danling County, (33%) was moderately suitable ( $S_2$ ), (9%) was classified as marginally suitable ( $S_3$ ), (7%) of the area was founded currently not suitable ( $N_1$ ) and (25%) was very unsuitable for surface irrigation due to their high slope gradient. Drip irrigation was everywhere more suitable than surface irrigation due to the minor environmental impact that it caused. Areas highly suitable for this practice covered 38% of Danling County; about 10% was marginally suitable (the steep

dip slope and the structural rolling rises of the Jurassic period). The steeper zones of the study area (23%) were either approximately or totally unsuitable for such a practice.

Albaji et al. (2007) carried out a land suitability evaluation for surface and drip Irrigation in the Shavoor Plain, in Iran. The results showed that 41% of the area was suitable for surface irrigation ;50% of the area was highly recommend for drip irrigation and the rest of the area was not considered suitable for either irrigation method due to soil salinity and drainage problem.

Albaji et al. (2010a) compared the suitability of land for surface and drip irrigation methods according to a parametric evaluation system in the plains west of the city of Shush, in the southwest Iran. The results indicated that a larger amount of the land (30,100 ha –71.8%) can be classified as more suitable for drip irrigation than surface irrigation.

Albaji et al. (2010b) investigated different irrigation methods based upon a parametric evaluation system in an area of 29,300 ha in the Abbas plain located in the Elam province, in the West of Iran. The results demonstrated that by applying sprinkler irrigation instead of surface and drip irrigation methods, the arability of 21,250 ha (72.53%) in the Abbas plain will improve.

Albaji et al. (2010c) also provided a land suitability evaluation for surface, sprinkle and drip irrigation systems in Dosalegh plain: Iran. The comparison of the different types of irrigation techniques revealed that the drip and sprinkler irrigations methods were more effective and efficient than that of surface irrigation for improved land productivity. However, the main limiting factor in using either surface or/and sprinkler irrigation methods in this area were soil texture, salinity, and slope, and the main limiting factor in using drip irrigation methods were the calcium carbonate content, soil texture and salinity.

The main objective of this research is to evaluate and compare land suitability for surface, sprinkle and drip irrigation methods based on the parametric evaluation systems for the West North Ahwaz Plain, in the Khuzestan Province, Iran.

## **2. Materials and Methods**

The present study was conducted in an area about 37324.91 hectares in the West north ahwaz Plain, in the Khuzestan Province, located in the West of Iran during 2009-2011. The study area is located 5 km West of the city of Andimeshk, 31° 20' to 31 ° 40' N and 48 ° 36' to 48° 47' E. The Average annual temperature and precipitation for the period of 1965-2004 were 24.5 C° and 210 mm, respectively. Also, the annual evaporation of the area is 2,550 mm (Khuzestan Water & Power Authority [KWPA], 2005). The Karun River supplies the bulk of the water demands of the region. The application of irrigated agriculture has been common in the study area. Currently, the irrigation systems used by farmlands in the region are furrow irrigation, basin irrigation and border irrigation schemes.

The area is composed of three distinct physiographic features i.e. River Alluvial Plains and Plateaux Terraces, of which the Piedmont Alluvial Plains physiographic unit is the dominating features. Also, twenty two different soil series were found in the area (Table.1).

**Table 1.**Soil series of the study area.

---

Characteristics description

---

Soil texture " Heavy : \*CL", without salinity and alkalinity limitation, Depth 150 cm, level to very gently sloping : 0 to 2%, imperfectly drained.

Soil texture " Heavy : CL", very severe salinity and alkalinity limitation, Depth 100 cm, level to very gently sloping : 0 to 2%, poorly drained.

Soil texture " Medium : SL", without salinity and alkalinity limitation, Depth 150 cm, level to very gently sloping : 0 to 2%, moderately drained.

Soil texture " Heavy : SIC", without salinity and alkalinity limitation, Depth 120 cm, level to very gently sloping : 0 to 2%, imperfectly drained.

Soil texture " Medium : SL", without salinity and alkalinity limitation, Depth 150 cm, level to very gently sloping : 0 to 2%, moderately drained.

Soil texture " Very Heavy: C", slight salinity and alkalinity limitation, Depth 125 cm, level to very gently sloping : 0 to 2%, poorly drained.

Soil texture " Very Heavy : SIC", very severe salinity and alkalinity limitation , Depth 140cm, level to very gently sloping : 0 to 2%, very poorly drained.

Soil texture" Very Heavy: C", severe salinity and alkalinity limitation, Depth 150cm, level to very gently sloping : 0 to 2%, very poorly drained.

Soil texture" Heavy: SICL", without salinity and alkalinity limitation, Depth 110 cm, level to very gently sloping : 0 to 2%, poorly drained.

Soil texture" Very Heavy: C", severe salinity and alkalinity limitation, Depth 150 cm, level to very gently sloping : 0 to 2%, very poorly drained.

Soil texture " Very Heavy : C", very severe salinity and alkalinity limitation, Depth 110 cm, level to very gently sloping : 0 to 2%, very poorly drained.

Soil texture " Medium : L", without salinity and alkalinity limitation, Depth 170 cm, level to very gently sloping : 0 to 2%, moderately drained.

Soil texture " Heavy : SICL", without salinity and alkalinity limitation, Depth 150 cm, level to very gently sloping : 0 to 2%, well drained.

Soil texture " Very Heavy : SIC", moderate salinity and alkalinity limitation, Depth 150 cm, level to very gently sloping : 0 to 2%, imperfectly drained.

Soil texture " Heavy: SICL", without salinity and alkalinity limitation, Depth 135 cm, level to very gently sloping : 0 to 2%, well drained.

Soil texture" Heavy: SICL",very without salinity and alkalinity limitation, Depth 150cm, level to very gently sloping : 0 to 2%, well drained.

Soil texture" Heavy: SCL", without salinity and alkalinity limitation, Depth 150 cm, level to very gently sloping : 0 to 2%, well drained.

Soil texture " Medium: SIL", slight salinity and alkalinity limitation, Depth 135 cm, level to very gently sloping : 0 to 2%, well drained.

Soil texture " Heavy : SICL", without salinity and alkalinity limitation , Depth 140cm, level to very gently sloping : 0 to 2%, well drained.

Soil texture" Heavy: SICL", without salinity and alkalinity limitation, Depth 150cm, level to very gently sloping : 0 to 2%, well drained.

Soil texture " Medium : SIL", slight salinity and alkalinity limitation, Depth 140 cm, level to very gently sloping : 0 to 2%, well drained.

Soil texture " Heavy : SICL", slight salinity and alkalinity limitation, Depth 130 cm, level to very gently sloping : 0 to 2%, well drained.

\* Texture symbols: LS: Loamy Sand, SL: Sandy Loam, L: Loam , SIL: Silty Loam , CL: Clay Loam , SICL: Silty Clay Loam , SCL: Sandy Clay Loam , SC: Sandy Clay , SIC: Silty Clay , C: Clay.

The semi-detailed soil survey report of the West north ahwaz plain (KWPA. 2009) was used in order to determine the soil characteristics. Table.2 has shown some of physico - chemical characteristics for reference profiles of different soil series in the plain. The land evaluation was determined based upon topography and soil characteristics of the region. The topographic characteristics included slope and soil properties such as soil texture, depth, salinity, drainage and calcium carbonate content were taken into account. Soil properties such as cation exchange capacity (CEC), percentage of basic saturation (PBC), organic mater (OM) and pH were considered in terms of soil fertility. Sys et al. (1991) suggested that soil characteristics such as OM and PBS do not require any evaluation in arid regions whereas clay CEC rate usually exceeds the plant requirement without further limitation, thus, fertility properties can be excluded from land evaluation if it is done for the purpose of irrigation.

**Table 2.**Some of physico - chemical characteristics for reference profiles of different soil series.

Soil seris.No	Soil seris.name	Depth (Cm)	Soil texture	ECe (ds.m <sup>-1</sup> )	pH	OM (%)	CEC (meq/100g)	CaCo <sub>3</sub> (%)
1	Veyss	150	CL	1.50	7.90	0.24	8.54	48.00
2	Omel Gharib	100	CL	48.00	7.70	0.46	5.61	49.00
3	Ramin	150	SL	1.10	7.80	0.39	8.19	41.00
4	Amerabad	120	SIC	3.50	8.50	0.23	10.31	48.00
5	Solieh	150	SL	3.40	7.90	0.29	5.57	34.00
6	Band Ghir	125	C	4.10	8.00	0.52	15.24	35.00
7	Abu Baghal	140	SIC	52.00	8.10	0.37	11.43	45.00
8	Sheykh Mussa	150	C	17.50	8.40	0.56	13.26	46.00
9	Safak	110	SICL	3.90	8.10	0.47	13.53	40.00
10	Molla Sani	150	C	21.50	7.90	0.36	12.91	39.00

11	Teal Bomeh	110	C	55.00	7.90	0.68	9.85	49.00
12	Karkheh	170	L	2.70	7.70	0.29	6.49	46.00
13	Karun 1	150	SICL	2.20	7.70	0.25	9.21	47.00
14	Shoteyt	150	SIC	9.50	7.90	0.60	8.66	47.00
15	Abbasieh 1	140	SICL	1.10	7.60	0.39	8.63	51.00
16	Deylam 1	150	SICL	2.90	7.50	0.28	10.48	50.00
17	Qalimeh	150	SCL	1.20	7.90	0.26	12.05	49.00
18	Abbasieh 2	135	SIL	5.90	7.60	0.39	12.73	44.00
19	Karun 2	140	SICL	1.00	7.60	0.41	10.22	51.00
20	Deylam 2	150	SICL	3.40	7.50	0.32	10.81	49.00
21	Ghaleh Nasir	140	SIL	4.20	7.60	0.38	11.56	51.00
22	Abdul Amir	130	SICL	7.50	7.80	0.57	10.38	46.00

Based upon the profile description and laboratory analysis, the groups of soils that had similar properties and were located in a same physiographic unit, were categorized as soil series and were taxonomied to form a soil family as per the Keys to Soil Taxonomy (2008). Ultimately, twenty two soil series were selected for the surface, sprinkle and drip irrigation land suitability.

In order to obtain the average soil texture, salinity and  $\text{CaCO}_3$  for the upper 150cm of soil surface, the profile was subdivided into 6 equal sections and weighting factors of 2, 1.5, 1, 0.75, 0.50 and 0.25 were used for each section, respectively (Sys et al.1991).

For the evaluation of land suitability for surface, sprinkle and drip irrigation, the parametric evaluation system was used (Sys et al. 1991). This method is based on morphology, physical and chemical properties of soil.

Six parameters including slope, drainage properties, electrical conductivity of soil solution, calcium carbonates status, soil texture and soil depth were also considered and rates were assigned to each as per the related tables, thus, the capability index for irrigation (Ci) was developed as shown in the equation below:

$$Ci = A \times \frac{B}{100} \times \frac{C}{100} \times \frac{D}{100} \times \frac{E}{100} \times \frac{F}{100}$$

where A, B, C, D, E, and F are soil texture rating, soil depth rating, calcium carbonate content rating, electrical conductivity rating, drainage rating and slope rating, respectively.

In Table 3 the ranges of capability index and the corresponding suitability classes are shown.

**Table 3.** Suitability Classes for the Irrigation Capability Indices (Ci) Classes.

Capability Index	Definition	Symbol
> 80	Highly Suitable	S1
60-80	Moderately Suitable	S2
45-59	Marginally Suitable	S3
30-44	Currently Not Suitable	N1
< 29	Permanently Not Suitable	N2

In order to develop land suitability maps for different irrigation methods (Figs.2-5), a semi-detailed soil map (Fig.1) prepared by Albaji was used, and all the data for soil characteristics were analyzed and incorporated in the map using ArcGIS 9.2 software.

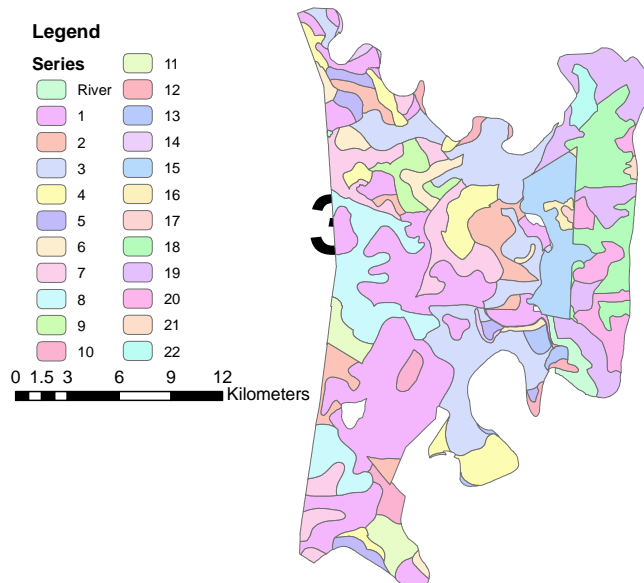
The digital soil map base preparation was the first step towards the presentation of a GIS module for land suitability maps for different irrigation systems. The Soil map was then digitized and a database prepared. A total of twenty two different polygons or land mapping units (LMU) were determined in the base map. Soil characteristics were also given for each LMU. These values were used to generate the land suitability maps for surface, sprinkle and drip irrigation systems using Geographic Information Systems.

### 3. Results and Discussion

Over much of the West north ahwaz Plain, the use of surface irrigation systems has been applied specifically for field crops to meet the water demand of both summer and winter crops .The major irrigated broad-acre crops grown in this area are wheat, barley, and maize, in addition to fruits , melons, watermelons and vegetables such as tomatoes and cucumbers. There are very few instances of sprinkle and drip irrigation on large area farms in the West north ahwaz Plain.

Twenty two soil series and eighty six series phases or land units were derived from the semi-detailed soil study of the area(Table.1). The land units are shown in Fig.1 as the basis for further land evaluation practice. The soils of the area are of Aridisols and Entisols orders. Also, the soil moisture regime is Aridic and Aquic while the soil temperature regime is Hyperthermic (KWPA.2003).





**Fig.1.** Soil Map of the Study Area.

As shown in Tables 4 and 5 for surface irrigation, the soil series coded 13, 16, 17, 18 and 20 (4233.46 ha - 11.36%) were highly suitable ( $S_1$ ); soil series coded 1, 12, 15, 19, 21 and 22 (14041.96 ha - 37.62 %) were classified as moderately suitable ( $S_2$ ), soil series coded 3, 4, 5 and 9 (8835.99 ha - 23.66%) were found to be marginally suitable ( $S_3$ ). soil series coded 6 and 14 (1033.86 ha - 2.77%) were classified as currently not-suitable ( $N_1$ ) and soil series coded 2, 7, 8, 10 and 11 (8714.66 ha - 23.34 %) were classified as permanently not-suitable ( $N_2$ ) for any surface irrigation practices.

**Table 4 .**  $C_i$  Values and Suitability Classes of Surface ,Sprinkle and Drip irrigation for Each Land Units.

Codes of Land Units	Surface Irrigation		Sprinkle Irrigation		Drip Irrigation	
	$C_i$	suitability classes	$C_i$	suitability classes	$C_i$	suitability classes
1	70.2	S2 sw <sup>a</sup>	76.5	S2 sw <sup>b</sup>	72	S2 sw <sup>c</sup>
2	11.40	N2 snw	12.6	N2 snw	12.8	N2 snw
3	59.23	S3 sw	76.95	S2 s	76	S2 s
4	52.21	S3 sw	57.37	S3 sw	54.4	S3 sw
5	59.23	S3 sw	76.95	S2 s	76	S2 s
6	40.27	N1snw	47.23	S3 sw	45.22	S3 sw
7	17.90	N2 snw	22.37	N2 snw	22.1	N2 snw
8	20.88	N2 snw	25.81	N2 snw	25.5	N2 snw
9	52.65	S3 sw	58.5	S3 sw	56	S3 sw

10	20.88	N2 snw	25.81	N2 snw	25.5	N2 snw
11	17.90	N2 snw	22.37	N2 snw	22.1	N2 snw
12	71.07	S2 sw	76.95	S2 s	72	S2 S
13	87.75	S1	90	S1	80	S1
14	41.76	N1snw	48.76	S3 snw	46.24	S3 snw
15	78	S2 s	80	S1	70	S2 S
16	87.75	S1	90	S1	80	S1
17	83.36	S1	85.5	S1	76	S2 S
18	83.36	S1	85.5	S1	76	S2 S
19	78	S2 S	80	S1	70	S2 S
20	87.75	S1	90	S1	80	S1
21	74.1	S2 s	76	S2 S	66.5	S2 S
22	78.97	S2 sn	85.5	S1	76	S2 S

a & b . Limiting Factors for Surface and Sprinkle Irrigations: n: (Salinity & Alkalinity), w: (Drainage) and s: (Soil Texture).

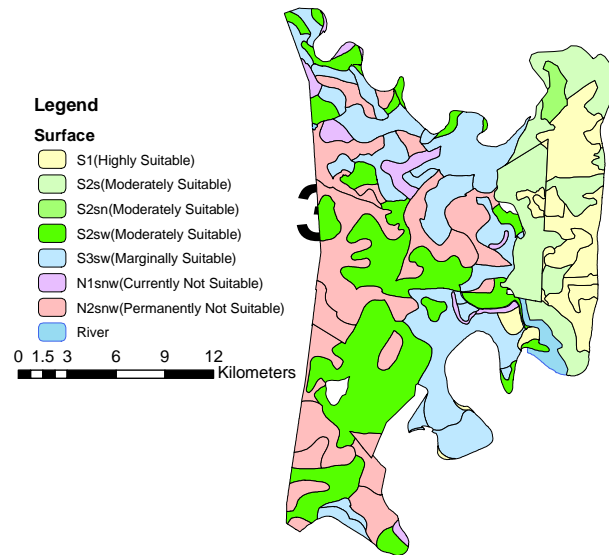
c. Limiting Factors for Drip Irrigation: s: (Calcium Carbonate & Soil Texture), w: (Drainage) and n: (Salinity & Alkalinity) .

**Table 5.** Distribution of Surface, Sprinkle and Drip Irrigation Suitability.

Suitability	Surface Irrigation			Sprinkle Irrigation			Drip Irrigation		
	Land unit	Area (ha)	Ratio (%)	Land unit	Area (ha)	Ratio (%)	Land unit	Area (ha)	Ratio (%)
S1	13, 16, 17, 18, 20	4233.46	11.36	13, 15, 16, 17, 18, 19, 20, 22	9329.14	25.01	13, 16, 20	1724.88	4.64
S2	1, 12, 15, 19, 21, 22	14041.96	37.62	1, 3, 5, 12, 21	14938.7	40.02	1, 3, 5, 12, 15, 17, 18, 19, 21, 22	22542.96	60.39
S3	3, 4, 5, 9	8835.99	23.66	4, 6, 9, 14	3877.43	10.38	4, 6, 9, 14	3877.43	10.38
N1	6, 14	1033.86	2.77	-	-	-	-	-	-
N2	2, 7, 8, 10, 11	8714.66	23.34	2, 7, 8, 10, 11	8714.66	23.34	2, 7, 8, 10, 11	8714.66	23.34
<sup>a</sup> Mis Land		464.99	1.25		464.99	1.25		464.99	1.25
Total		37324.91	100		37324.91	100		37324.91	100

a. Miscellaneous Land: (Hill, Sand Dune and River Bed)

The analysis of the suitability irrigation maps for surface irrigation (Fig. 2) indicate that some portion of the cultivated area in this plain (located in the east) is deemed as being highly suitable land due to deep soil, good drainage, texture, salinity and proper slope of the area. The moderately suitable area is mainly located to the center, and east of this area due to soil texture and drainage limitations. Other factors such as depth and slope have no influence on the suitability of the area whatsoever. The map also indicates that some part of the cultivated area in this plain was evaluated as marginally suitable because of the drainage and soil texture limitations. The current non-suitable land and permanently non-suitable land can be observed only in the west and center of the plain because of very severe limitation of salinity & alkalinity, drainage and soil texture. For almost the total study area elements such as soil depth, slope and CaCO<sub>3</sub> were not considered as limiting factors.

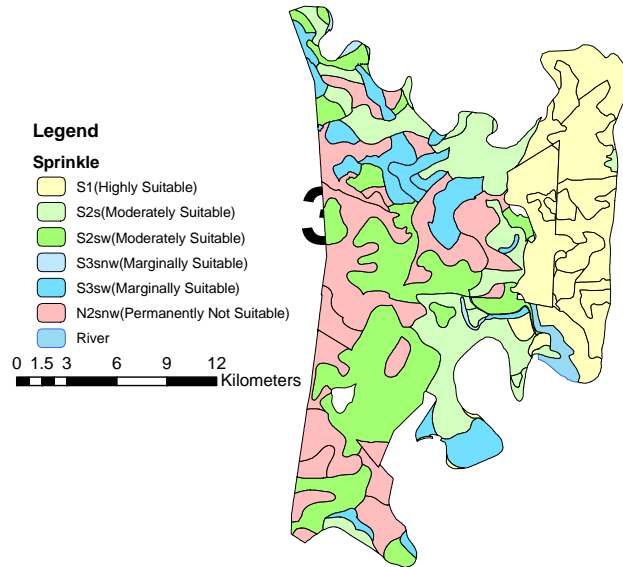


**Fig .2.** Land Suitability Map for Surface Irrigation.

In order to verify the possible effects of different management practices, the land suitability for sprinkle and drip irrigation was evaluated (Tables 4 and 5).

For sprinkle irrigation, soil series coded 13, 15, 16, 17, 18, 19, 20 and 22 (9329.14 ha - 25.01%) were highly suitable (S<sub>1</sub>) while soil series coded 1, 3, 5, 12 and 21 (14938.7 ha- 40.02%) were classified as moderately suitable (S<sub>2</sub>). Further, soil series coded 4, 6, 9 and 14 (3877.43 ha - 10.38%) were found to be marginally suitable (S<sub>3</sub>) and soil series coded 2, 7, 8, 10 and 11 (8714.66 ha - 23.34 %) were classified as permanently not-suitable (N<sub>2</sub>) for sprinkle irrigation.

Regarding sprinkler irrigation, (Fig. 3) the highly suitable area can be observed in the some part of the cultivated zone in this plain (located in the east) due to deep soil, good drainage, texture, salinity and proper slope of the area. As seen from the map, the largest part of the cultivated area in this plain was evaluated as moderately suitable for sprinkle irrigation because of the moderate limitations of drainage and soil texture. Other factors such as depth, salinity and slope never influence the suitability of the area. The marginally suitable lands are located only in the North and south of the plain. The permanently non-suitable land can be observed in the west and center of the plain and their non-suitability of the land are due to the severe limitations of salinity & alkalinity, drainage and soil texture. The current non-suitable lands did not exist in this plain. For almost the entire study area slope, soil depth and  $\text{CaCO}_3$  were never taken as limiting factors.

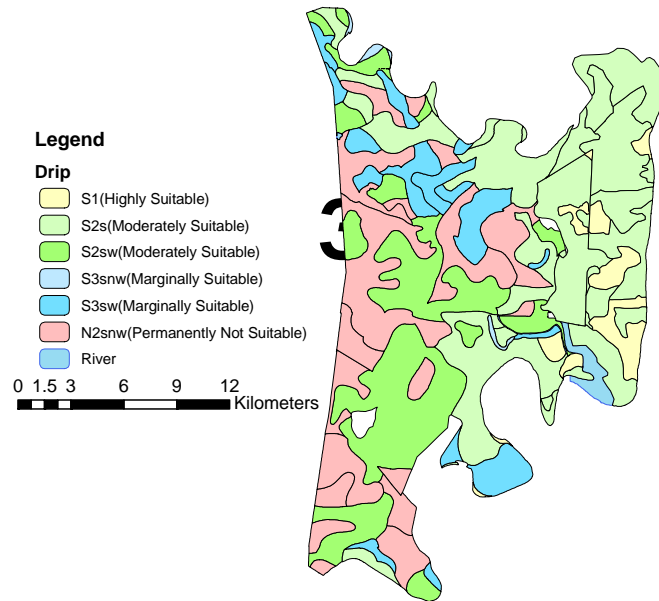


**Fig .3.** Land Suitability Map for Sprinkle Irrigation.

For drip irrigation, soil series coded 13, 16 and 20 (1724.88 ha-4.64%) were highly suitable ( $S_1$ ) while soil series coded 1, 3, 5, 12, 15, 17, 18, 19, 21 and 22 (22542.96 ha- 60.39%) were classified as moderately suitable ( $S_2$ ). Further, soil series coded 4, 6, 9 and 14 (3877.43 ha, 10.38%) were found to be slightly suitable ( $S_3$ ) and soil series coded 2, 7, 8, 10 and 11 (8714.66 ha - 23.34 %) were classified as permanently not-suitable ( $N_2$ ) for drip irrigation.

Regarding drip irrigation, (Fig. 4) the highly suitable lands covered the smallest part of the plain. The slope, soil texture, soil depth, calcium carbonate, salinity and drainage were in good conditions .The moderately suitable lands could be observed over a large portion of

the plain (east, north and south parts) due to the medium content of calcium carbonate. The marginally suitable lands were found only in the Northwest and southeast of the area. The limiting factors for this land unit were drainage and the medium content of calcium carbonate. The permanently non-suitable land can be observed in the west and center of the plain and their non-suitability of the land are due to the severe limitations of calcium carbonate, salinity & alkalinity, drainage and soil texture. The current non-suitable lands did not exist in this plain. For almost the entire study area slope, soil depths were never taken as limiting factors.



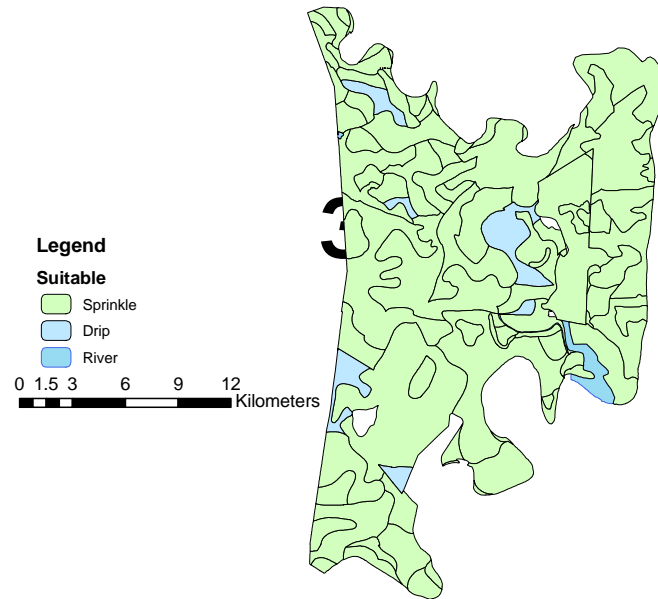
**Fig .4.** Land Suitability Map for Drip Irrigation.

The mean capability index ( $C_i$ ) for surface irrigation was 55.90 (Marginally suitable) while for sprinkle irrigation it was 62.33 (Moderately suitable). Moreover, for drip irrigation it was 58.31 (Marginally suitable). For the comparison of the capability indices for surface, sprinkle and drip irrigation. Tables 6 indicated that in soil series coded 2 applying drip irrigation systems was the most suitable option as compared to surface and sprinkle irrigation systems. In soil series coded 1,3,4,5,6,7,8,9,10,11,12,13,14,15,16,17,18,19,20,21 and 22 applying sprinkle irrigation systems was more suitable than surface and drip irrigation systems. Fig.5 shows the most suitable map for surface, sprinkle and drip irrigation systems in the West north ahwaz plain as per the capability index ( $C_i$ ) for different irrigation systems. As seen from this map, the largest part of this plain was suitable for sprinkle irrigation systems and some parts of this area was suitable for drip irrigation systems.

**Table 6.** The Most Suitable Land Units for Surface, Sprinkle and Drip Irrigation Systems by Notation to Capability Index (Ci) for Different Irrigation Systems.

Codes of Land Units	The Maximum Capability Index for Irrigation(Ci)	Suitability Classes	The Most Suitable Irrigation Systems	aLimiting Factors
1	76.5	S2 sw	Sprinkle	Soil Texture and Drainage
	12.8		Drip	CaCo3& Soil Texture, Salinity & Alkalinity and Drainage
2		N2 snw		
3	76.95	S2 s	Sprinkle	Soil Texture
4	57.37	S3 sw	Sprinkle	Soil Texture and Drainage
5	76.95	S2 s	Sprinkle	Soil Texture
6	47.23	S3 sw	Sprinkle	Soil Texture and Drainage
	22.37		Sprinkle	Soil Texture , Salinity & Alkalinity and Drainage
7		N2 snw		
	25.81		Sprinkle	Soil Texture , Salinity & Alkalinity and Drainage
8		N2 snw		
9	58.5	S3 sw	Sprinkle	Soil Texture and Drainage
	25.81		Sprinkle	Soil Texture , Salinity & Alkalinity and Drainage
10		N2 snw		
	22.37		Sprinkle	Soil Texture , Salinity & Alkalinity and Drainage
11		N2 snw		
12	76.95	S2 s	Sprinkle	Soil Texture
13	90	S1	Sprinkle	No Exist
	48.76	S3 snw	Sprinkle	Soil Texture , Salinity & Alkalinity and Drainage
14				
15	80	S1	Sprinkle	No Exist
16	90	S1	Sprinkle	No Exist
17	85.5	S1	Sprinkle	No Exist

18	85.5	S1	Sprinkle	No Exist
19	80	S1	Sprinkle	No Exist
20	90	S1	Sprinkle	No Exist
21	76	S2 <sub>s</sub>	Sprinkle	Soil Texture
22	85.5	S1	Sprinkle	No Exist



**Fig .5.**The most suitable map for different irrigation systems.

The results of Tables 4, 5 and 6 indicated that by applying sprinkle irrigation instead of surface and drip irrigation methods, the land suitability of 35038,81 ha (93.87%) of the west north ahwaz Plain's land could be improved substantially. However by applying drip Irrigation instead of surface and sprinkle irrigation methods, the suitability of 1821,12 ha (4.88%) of this Plain's land could be improved. The comparison of the different types of irrigation revealed that sprinkle irrigation was more effective and efficient then the drip and surface irrigation methods and improved land suitability for irrigation purposes. The second best option was the application of drip irrigation which was considered as being more practical than the surface irrigation method. To sum up the most suitable irrigation systems for the west north ahwaz Plain' were sprinkle irrigation, drip irrigation and surface irrigation respectively. Moreover, the main limiting factor in using surface and sprinkle irrigation methods in this area were salinity & alkalinity, drainage and soil texture and the main limiting factors in using drip irrigation methods were the salinity & alkalinity, drainage, soil texture and calcium carbonate.

#### **4. Conclusions**

Several parameters were used for the analysis of the field data in order to compare the suitability of different irrigation systems. The analyzed parameters included soil and land characteristics. The results obtained showed that sprinkle and drip irrigation systems are more suitable than surface irrigation method for most of the study area. The major limiting factor for both sprinkle and surface irrigation methods were salinity & alkalinity, drainage and soil texture. However for drip irrigation method, salinity & alkalinity, drainage, soil texture and calcium carbonate were restricting factors. The results of the comparison between the maps indicated that the introduction of a different irrigation management policy would provide an optimal solution in as such that the application of sprinkle and drip irrigation techniques could provide beneficial and advantageous. This is the current strategy adopted by large companies cultivating in the area and it will provide to be economically viable for Farmers in the long run.

Such a change in irrigation management practices would imply the availability of larger initial capitals to farmers (different credit conditions, for example) as well as a different storage and market organization. On the other hand, because of the insufficiency of water in arid and semi arid climate, the optimization of water use efficiency is necessary to produce more crops per drop and to help resolve water shortage problems in the local agricultural sector. The shift from surface irrigation to high-tech irrigation technologies, e.g. sprinkle and drip irrigation systems, therefore, offers significant water-saving potentials. On the other hand, since sprinkle and drip irrigation systems typically apply lesser amounts of water (as compared with surface irrigations methods) on a frequent basis to maintain soil water near field capacity, it would be more beneficial to use sprinkle and drip irrigations methods in this plain.

In this study, an attempt has been made to analyze and compare three irrigation systems by taking into account various soil and land characteristics. The results obtained showed that sprinkle and drip irrigation methods are more suitable than surface or gravity irrigation method for most of the soils tested. Moreover, because of the insufficiency of surface and ground water resources, and the aridity and semi-aridity of the climate in this area, sprinkle and drip irrigation methods are highly recommended for a sustainable use of this natural resource; hence, the changing of current irrigation methods from gravity (surface) to pressurized (sprinkle and drip) in the study area are proposed.

#### **5. Acknowledgements**

The writers gratefully acknowledge the Research and Standards Office for Irrigation and Drainage Networks of Khuzestan, Water and Power Authority (KWPA), Shahid Chamran University and Science Excellency of Irrigation & Drainage Networks Management for their financial support and assistance during the study and field visits.

#### **6. References**



Albaji, M. Landi, A. Boroomand Nasab, S. & Moravej, K.(2007). Land Suitability Evaluation for Surface and Drip Irrigation in Shavoor Plain Iran *Journal of Applied Sciences*, 8(4):654-659.

Albaji, M. Boroomand Nasab, S. Kashkoli, H.A. & Naseri, A.A. (2010a). Comparison of different irrigation methods based on the parametric evaluation approach in the plain west of Shush, Iran. *Irrig. & Drain*. ICID.

Albaji, M. Boroomand Nasab, S. Naseri, A.A. & Jafari, S. (2010b). Comparison of different irrigation methods based on the parametric evaluation approach in Abbas plain–Iran. *J. Irrig. and Drain Eng. (ASCE)* 136 (2), 131-136.

Albaji, M. Shahnazari,A. Behzad,M. Naseri, A.A. Boroomand Nasab, S. & Golabi,M.(2010c). Comparison of different irrigation methods based on the parametric evaluation approach in Dosalegh plain: Iran. *Agricultural Water Management* 97 (2010) 1093-1098.

Barberis, A. & Minelli, S. (2005). *Land Evaluation in the Shouyang County, Shanxi Province, China*. 25th Course Professional Master. 8th Nov 2004-23 Jun 2005.IAO,Florence,Italy.< [http://www.iao.florence.it/training/geomatics/Shouyang/China\\_25hq.pdf](http://www.iao.florence.it/training/geomatics/Shouyang/China_25hq.pdf)>.

Bazzani, F. & Incerti, F. (2002). *Land Evaluation in the Province of Larache,Morocco*. 22nd Course Professional Master. Geometric and Natural Resources Evaluation. 12 Nov 2001-21 June 2002. IAO, Florence, Italy. < [http://www.iao.florence.it/training/geomatics/Larache/Morocco\\_22.pdf](http://www.iao.florence.it/training/geomatics/Larache/Morocco_22.pdf)>.

Bienvenue, J .S. Ngardeta, M. & Mamadou, K. (2003). *Land Evaluation in the Province of Thies, Senegal* . 23rd Course Professional Master. Geometric and Natural Resources Evaluation.8th Nov 2002-20 June 2003. IAO, Florence,Italy. <<http://www.iao.florence.it/training/geomatics/Thies/senegal23.pdf>>.

Briza, Y. Dileonardo, F. & Spisni, A. (2001). *Land Evaluation in the Province of Ben Slimane, Morocco*. 21 st Course Professional Master.Remote Sensing and Natural Resource Evaluation .10 Nov 2000 - 22 June 2001. IAO, Florence, Italy. <<http://www.iao.florence.it/training/geomatics/BenSlimane/Marocco21.pdf>>.

Dengize, O. (2006). A Comparison of Different Irrigation Methods Based on the Parametric Evaluation Approach. *Turk. J. Agric For*, 30: 21 - 29. <http://journals.tubitak.gov.tr/agriculture/issues/tar-06-30-1/tar-30-1-3-0505-15.pdf>.

Food and Agriculture Organization of the United Nations (FAO). (1976). A Framework for Land Evaluation. *Soil Bulletin No.32*. FAO,Rome,Italy.72 pp.< <http://www.fao.org/docrep/x5310e/x5310e00.htm>>.

Hargreaves, H.G. & Mekley, G.P. (1998). *Irrigation fundamentals*. Water Resource Publication, LLC. 200 Pp.

Keys to soil taxonomy. (2008). U.S, Department of Agriculture . By Soil Survey Staff. Washington, DC, USA.< <http://www.statlab.iastate.edu/soils/keytax>>.

Khuzestan Water and Power Authority (KWPA). (2005). *Meteorology Report of West north ahwaz Plain, Iran* (in Persian).< <http://www.kwpa.com>>.

Khuzestan Water and Power Authority (KWPA). (2009). *Semi-detailed Soil Study Report of West north ahwaz Plain, Iran* (in Persian). <<http://www.kwpa.com>>.

Liu, W., Qin, Y. & Vital, L. (2006). *Land Evaluation in Danling county ,Sichuan province, China*. 26<sup>th</sup> Course Professional Master. Geometric and Natural Resources Evaluation. 7<sup>th</sup> Nov 2005–23<sup>rd</sup> Jun 2006. IAO, Florence, Italy.< [http://www.iao.florence.it/training/geomatics/Danling/China\\_26.pdf](http://www.iao.florence.it/training/geomatics/Danling/China_26.pdf)>.

Mbodj ,C. Mahjoub, I. & Sghaiev, N.( 2004). *Land Evaluation in the Oud Rmel Catchment, Tunisia*. 24<sup>th</sup> Course Professional Master. Geometric and Natural Resources Evaluation. 10<sup>th</sup> Nov 2003–23<sup>rd</sup> Jun 2004. IAO, Florence, Italy. <[http://www.iao.florence.it/training/geomatics/Zaghouan/Tunisia\\_24lq.pdf](http://www.iao.florence.it/training/geomatics/Zaghouan/Tunisia_24lq.pdf)>.

Sys, C. Van Ranst, E . & Debaveye, J. (1991). *Land Evaluation, Part I, Principles in Land Evaluation and Crop Production Calculations*. International Training Centre for Post-graduate Soil Scientists, University Ghent.< <http://www.plr.ugent.be/publicatie.html>>.